

# The road code

## 1. Intersections and the five give way rules

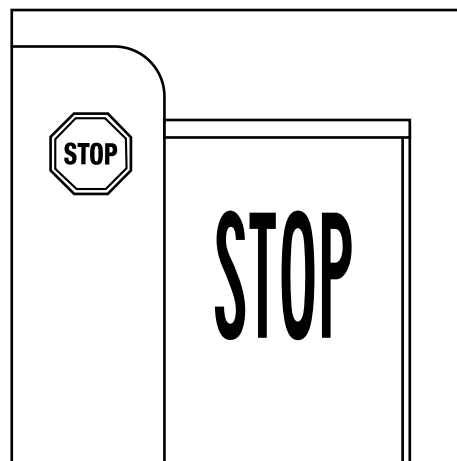
Give way rules are road rules that allow all road users to know who needs to give way and who may go first. Giving way to someone means you make sure that person doesn't have to do anything to avoid you.

Answer the following questions using the information provided. When you have finished, review your answers with your teacher and discuss the risks and safety aspects of each of the five give way rules. **Tip:** You are the cyclist in these scenarios.

### Give way rule #1

You must either completely stop, or give way when necessary at:

- Intersections that have no signs or traffic lights
- Stop signs
- Give way signs
- Traffic lights



You are approaching a stop sign on your bike.  
What do you do?

---



---



---



---



---



---



---



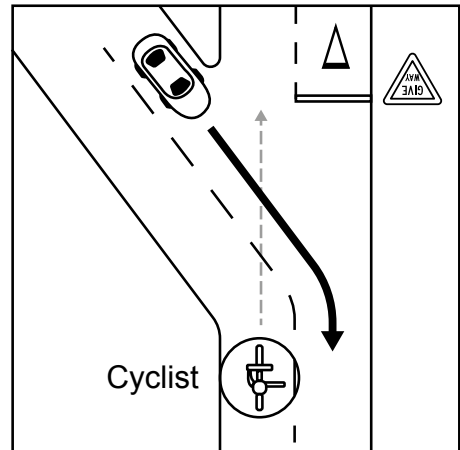
---



Kia mauri tū! What road rules do I know and why are they important?

### Give way rule #2

If you're turning, you must give way to vehicles that are going straight ahead. If you're leaving a marked centreline at an uncontrolled intersection, this counts as turning and you must give way to vehicles that are following the centreline. If you're riding across a footpath, bus lane or cycle lane, you must give way to people on the footpath or travelling in those lanes.



You are leaving a marked centreline at an uncontrolled intersection. What do you do?

---

---

---

---

---

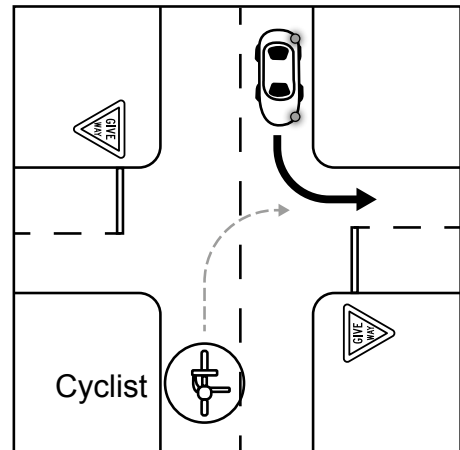
---

---

---

### Give way rule #3

If you're turning right, you must give way to all vehicles coming towards you including those turning left. This rule applies when both vehicles are facing the same signs or traffic lights, or when they're not facing any signs or traffic lights.



You are turning right and an oncoming car is turning left. What do you do?

---

---

---

---

---

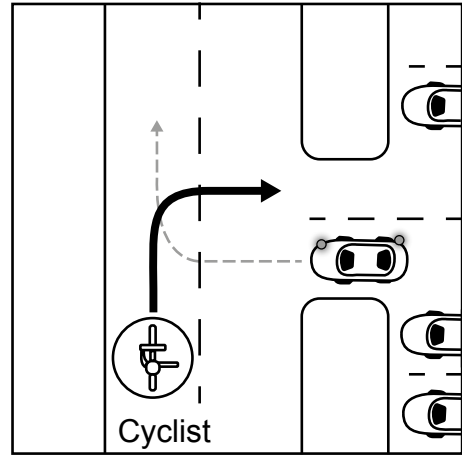
---

---

---

### Give way rule #4

At a T-intersection, public access or driveway, traffic on the road that is ending must give way to all traffic on the road that continues.



You are turning into a supermarket carpark from the road and a car is exiting. What do you do?

---

---

---

---

---

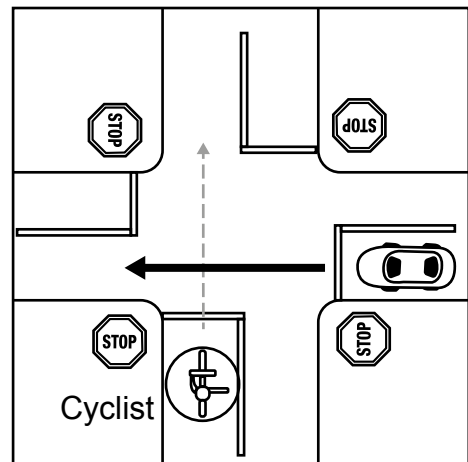
---

---

---

### Give way rule #5

If none of the other four give way rules apply, use rule #5. This rule says that you must give way to all vehicles coming from your right. If all roads at an intersection have the same sign or no sign, you must give way to everything coming from your right.



You are at a stop sign and all other intersections have the same sign. A car is coming from your right. What do you do?

---

---

---

---

---

---

---

---

## 2. Road signs and markings

Road signs tell you where you are and what to do. They help keep everyone safe. There are three types of signs: compulsory signs (red), warning signs (diamond-shaped) and information signs (a range of colours and sizes).

Test your knowledge of signs by completing the sign descriptions.



GIVE WAY

You must \_\_\_\_\_ down and be prepared to \_\_\_\_\_ for traffic in the roundabout or entering the \_\_\_\_\_ from the right.



One-way \_\_\_\_\_: give \_\_\_\_\_ to all vehicles \_\_\_\_\_ towards you.



You \_\_\_\_\_ turn \_\_\_\_\_ here.



This is a \_\_\_\_\_ path for \_\_\_\_\_ and \_\_\_\_\_.



You must \_\_\_\_\_ if you are \_\_\_\_\_.



\_\_\_\_\_ only lane that can be used by \_\_\_\_\_.



\_\_\_\_\_ path crossing \_\_\_\_\_.



\_\_\_\_\_ out for \_\_\_\_\_.



Take \_\_\_\_\_ cycling \_\_\_\_\_  
railway \_\_\_\_\_.



\_\_\_\_\_ surface.



Road \_\_\_\_\_ ahead.



\_\_\_\_\_ ahead.



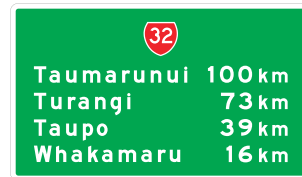
\_\_\_\_\_ on \_\_\_\_\_.



You \_\_\_\_\_ turn \_\_\_\_\_,  
but first \_\_\_\_\_ way to \_\_\_\_\_  
and vehicles.



\_\_\_\_\_ parking.



Shows \_\_\_\_\_ to  
\_\_\_\_\_.

When we know the road code, and understand why certain rules are in place and the real-life consequences of not following them, we are more aware and able to take better responsibility for our own actions as travellers.

Give way rule illustrations are sourced from The New Zealand Code for Cycling © 2020 Waka Kotahi NZ Transport Agency, all rights reserved.

Road sign illustrations are sourced from The Road Code © 2024 Waka Kotahi NZ Transport Agency, all rights reserved.