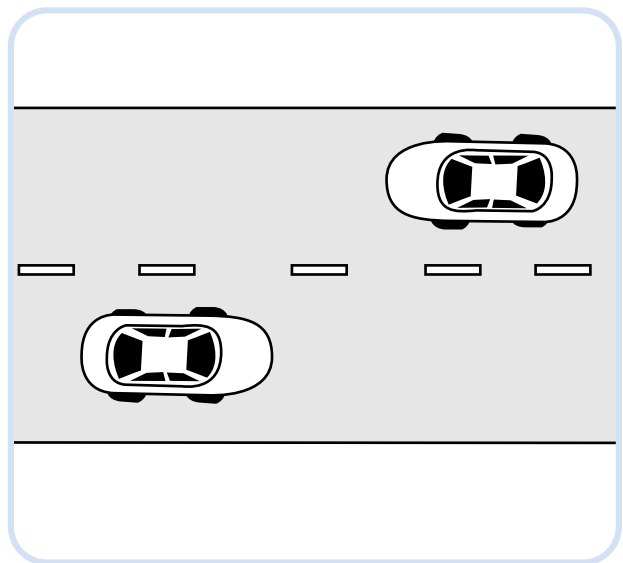
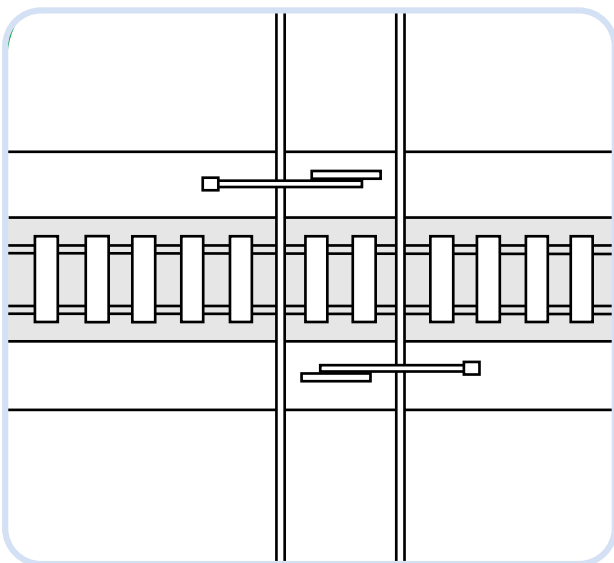
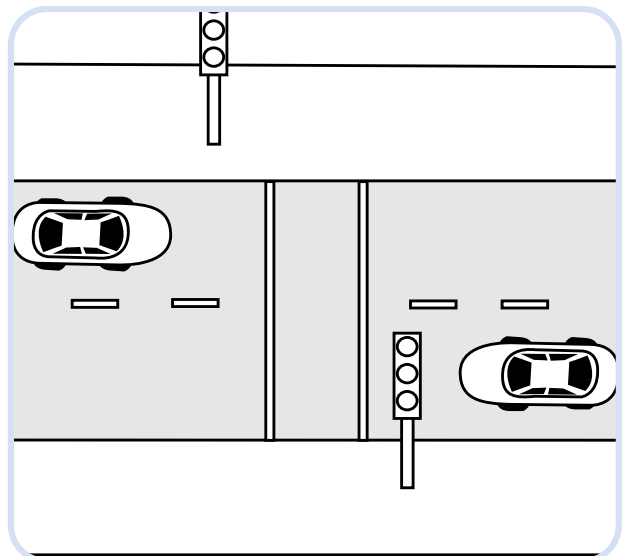
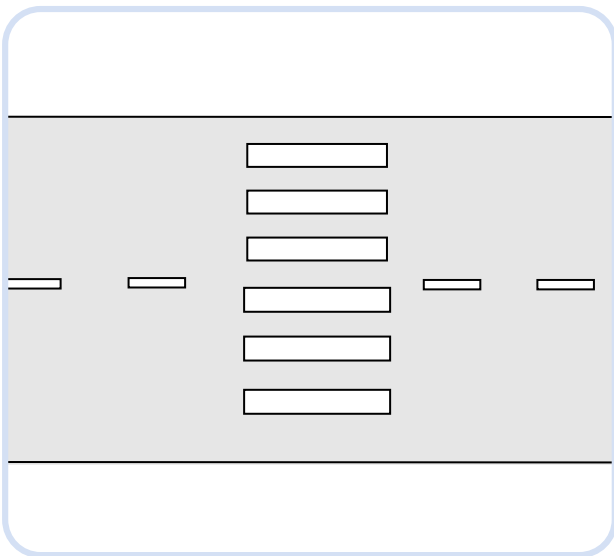


Travelling safely to school

1. Crossing roads and railway tracks safely:

Look at the pictures of different crossings below.
Circle the ones where it's safe to cross.



2. At a railway station or bus stop:

Imagine you're at a railway station or bus stop.

Draw things that you can see that help keep everyone safe.

Write or draw one safety rule you should follow at a railway station or bus stop.



3. Reflecting on personal safety:

Think about a time when you were near a road, bus stop or railway. Did you follow safety rules? Write about what you did to stay safe or what you should have done differently.



What have you learnt today? Share one thing you can do to stay safe around roads, bus stops and railways.

